



Established in 1927, General American Investors is a closed-end investment company listed on the New York Stock Exchange. Its objective is long-term capital appreciation through investment in companies with above average growth potential.

Company Information	
Stock Exchange	NYSE
Common Stock Symbol	GAM
Preferred Stock Symbol	GAM Pr b
Common Stock Cusip	368802104
Preferred Stock Cusip	368802401
Annual Data	
Expense Ratio	1.35%
2023 Dividend & Distribution	\$2.65

Quarter Ended Data	
NAV (XGAMX)	\$60.14
Common Closing Price	\$49.72
Preferred Liquidation Preference	\$25.00
Preferred Closing Price	\$24.84
Net Assets - Common	\$1,402.1 mil.
Liquidation Value - Preferred	\$190.0 mil.
Total	\$1,593.1 mil.
Asset Coverage	838.0%

## Share Buy Back Information

Since March 1995, the Board of Directors has authorized the repurchase of Common Stock in the open market when the shares trade at a discount to net asset value of at least 8%. Through June 30, 2024, the Company has repurchased a total of 32.9 million shares of Common Stock at a total cost of \$1.0 billion. During the six months ended June 30, 2024, 418,501 shares of Common Stock were repurchased at a cost of \$19,318,784 a discount of 18.0% to net asset value.

## Investment Results on an Annualized Basis

Years or Period	GAM Stockholder Return*	GAM Net Asset Value Return*	S&P 500 Stock Index Return*
6 Months**	15.4%	16.3%	16.9%
1 Year	21.3%	23.4%	19.6%
3 Years	16.2%	16.2%	14.6%
5 Years	10.8%	11.2%	12.3%
10 Years	10.3%	10.7%	12.9%
20 Years	8.5%	8.7%	10.0%

\* With dividends and distributions reinvested/with income.

\*\* Not Annualized.

## Largest Industry Sectors

Index Return*	% Common Net Assets*
Information Technology	25.6%
Financials	19.0%
Health Care	10.8%
Industrials	10.4%
Consumer Discretionary	10.1%
Communication Services	8.8%
Consumer Staples	8.5%
Energy	6.1%
Materials	4.6%
Utilities	1.0%
Other	0.6%
Total Long-Term Investments	105.5%
Cash, equivalents, receivables & other assets less liabilities	8.1%
Preferred Stock, at liquidation value	-13.6%
Total Net Assets Applicable to Common Stock	100.0%

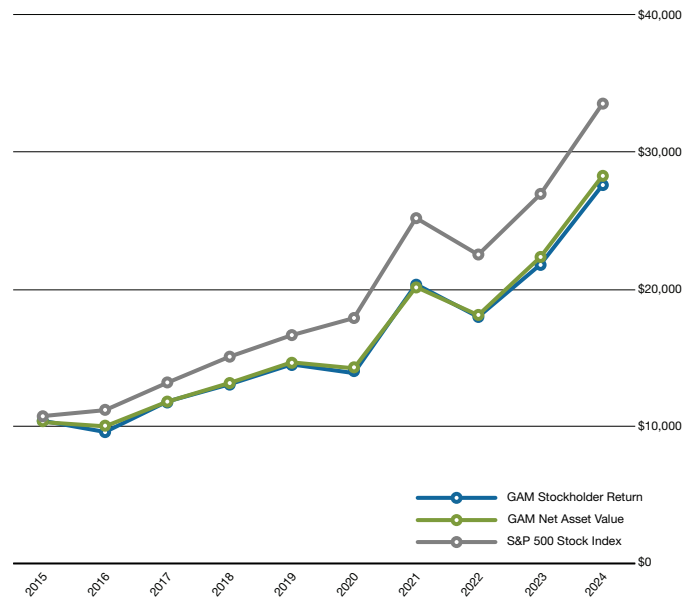
\* Net Assets Applicable to the Company's Common Stock



General American Investors Company, Inc.  
530 Fifth Avenue, New York, NY 10036  
(800) 436-8401  
www.generalamericaninvestors.com

## 10-Year Investment Results

Assuming an initial investment of \$10,000. For period ended June 30, 2024



## Ten Largest Equity Investments

Holding	Shares	Value	% Common Net Assets
Microsoft Corporation	205,000	\$91,624,750	6.5%
Republic Services, Inc.	435,625	\$84,659,363	6.0%
Alphabet Inc. - Class C	419,923	\$77,022,277	5.5%
ASML Holding N.V.	66,100	\$67,602,453	4.8%
Berkshire Hathaway Inc. - Class A	110	\$67,346,510	4.8%
Arch Capital Group Ltd.	660,249	\$66,612,522	4.8%
Apple Inc.	316,000	\$66,555,920	4.7%
The TJX Companies, Inc.	525,092	\$57,812,629	4.1%
Amazon.com, Inc.	286,000	\$55,269,500	4.0%
Everest Re Group, Ltd.	134,686	\$51,318,060	3.7%
		\$685,823,984	48.9%

\*Holdings are subject to change

Performance data quoted herein represents past performance. Past performance does not guarantee or indicate future results. Investment return and principal value of an investment will fluctuate so that an investor's shares when sold, may be worth more or less than their original cost. Current performance may be higher or lower than the performance data quoted.